

PART OF SECTIONS 29 & 32, T.7N., R.1E., S.L.B. & M.

NORDIC VALLEY ESTATES NO. 1

LOTS 10 – 21

IN WEBER COUNTY

SCALE 1" = 120'

TAXING UNIT: 36, 317

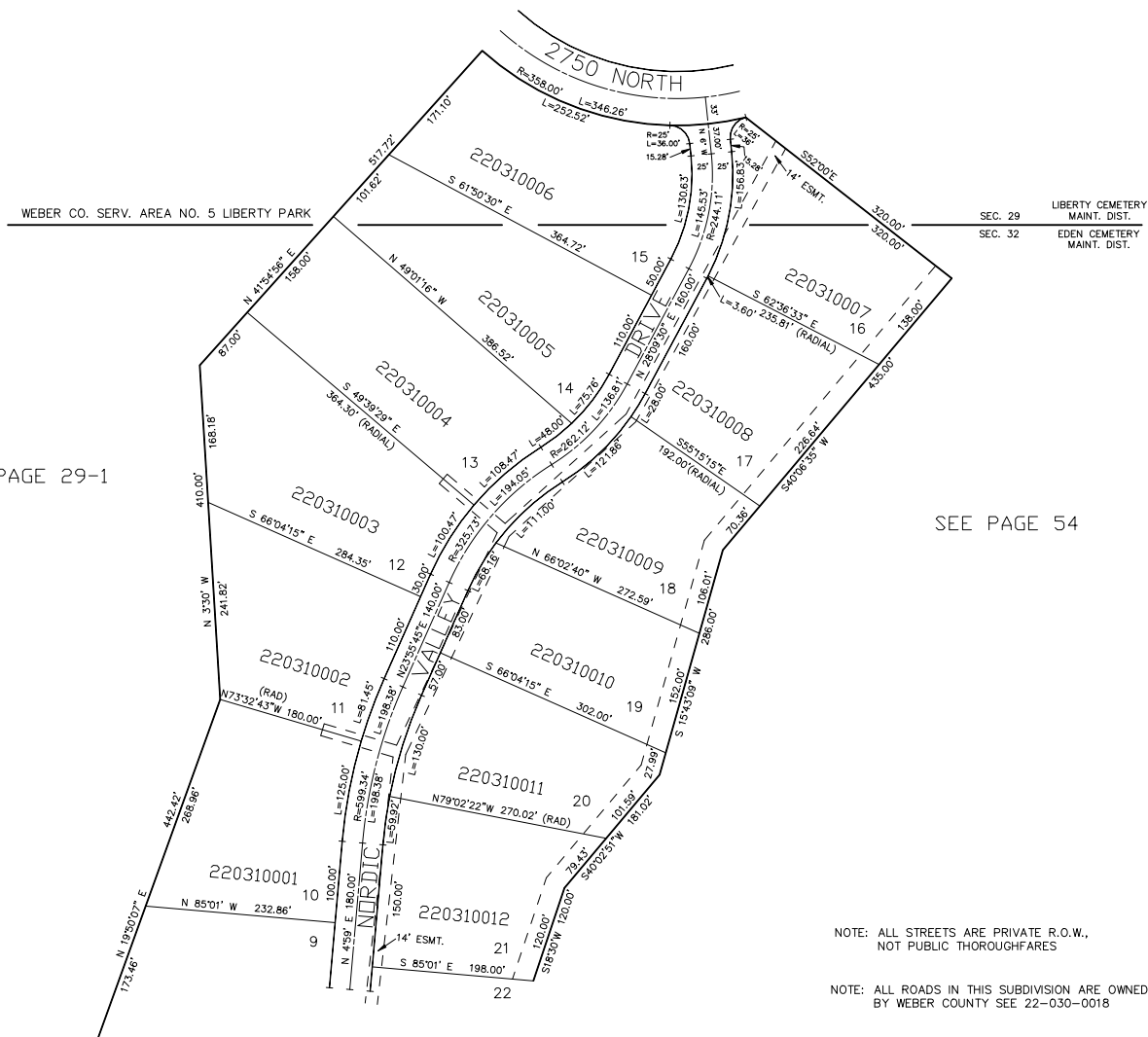
SEE PAGE 23-3

SEE PAGE 29-1

SEE PAGE 54

SEE PAGE 30

25' UTILITY & DRAINAGE EASEMENTS EACH
SIDE OF PROPERTY LINES AS INDICATED
BY DASHED LINES EXCEPT AS OTHERWISE
SHOWN.



NOTE: ALL STREETS ARE PRIVATE R.O.W.,
NOT PUBLIC THOROUGHFARES

NOTE: ALL ROADS IN THIS SUBDIVISION ARE OWNED
BY WEBER COUNTY SEE 22-030-0018

FOR COMPLETE ENG DATA SEE
ORIGINAL DEDICATION PLAT IN
BOOK 15, PAGE 89 & 90 OF RECORDS.